

A close-up photograph of a white medical examination chair. The chair has a thick, padded seat and a backrest that is partially visible. The base of the chair is white and features a control panel with several buttons and a warning symbol. The background is a plain, light-colored wall.

Ritter®

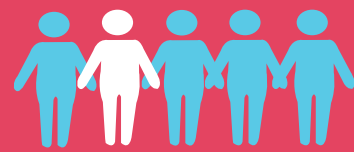
MEDICAL

224 + 225 Barrier-Free® Examination Chairs

224 + 225 Barrier-Free[®] Exam Chairs

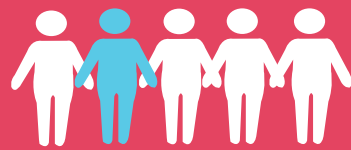
Your patients are changing. The number of elderly and obese in the US is steadily growing, and over one fifth of adults in America are disabled.¹ Assisting patients with mobility limitations onto exam chairs has become a frequently performed task. Although caregivers working in healthcare facilities are one of the most at-risk professions for musculoskeletal disorders,² little has been done to evaluate and reduce risk.

Exam tables in ambulatory settings typically have a fixed height of about 33 inches, requiring caregivers to assist or lift patients with mobility limitations. In some cases, patients are unable to get onto the exam table—this inhibits the exam process, lowers the quality of care received and diminishes desired outcomes.



1 in 5

Adults will be retired by 2030, for the first time in US history. Older adults are projected to outnumber children by 2035.³



1 in 5

Of the US population 65 years and older have some form of disability.¹



How much greater the risk of musculoskeletal disorders for nursing assistants than other workers.⁴

We can help.

Ritter Barrier-Free Examination Chairs by Midmark adjust in height from 18-37 inches, improving accessibility to the exam chair and reducing the likelihood of staff injury. In a recent study, caregivers reported dramatically less perceived physical exertion when using a height-adjustable exam chair versus a fixed-height table. In fact, results showed an actual 95% to 98% reduction in perceived physical exertion.⁴



BETTER ACCESSIBILITY

Ritter 224 and 225 Barrier-Free exam chairs are designed to offer low and high positioning heights so you can provide the best care to all patients, whether treating the elderly, expectant mothers or patients with disabilities.



The path to better care begins with a better vital signs process.

Vital signs are the beginning of the patient-caregiver interaction, providing critical information related to changes in patient health and playing an important role in a physician's treatment decisions. The integration of EMRs, new technologies and automated devices can have a significant impact on the overall efficiency of the process. In fact, by bringing all vital signs capture (including weight) to the point of care using an automated device, you can save over a minute per patient.

Using a Ritter Barrier-Free exam chair with an automated vital signs device like Midmark IQvitals® allows you to bring more to the point of care, not only saving time, but helping reduce common transcription errors. Once vital signs data is captured, it can be ported directly into the EMR.



*IQvitals
with Masimo®
optional SpO₂*



Accessories
help add
versatility +
function to
your exam
chair

STANDARD FEATURES



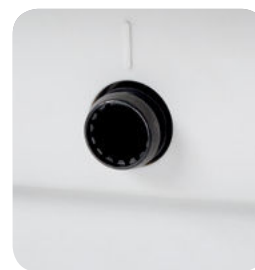
Stirrups + Pelvic Tilt*
Help position patients properly and comfortably for lower-body examinations.



Foot Control
Standard foot control designed to make patient positioning quick, effective and always within reach.



Tamper-Resistant Receptacles*
Easy-access receptacles on both sides of the chair provide a power connection for ancillary devices. And they are tamper resistant to help prevent injury.



Accessory Receivers
Standard receivers are designed to make the integration of accessories easy and efficient—no tools required.

OPTIONAL FEATURE



Clean Assist Roller System
The retractable roller base allows you to easily and safely move the chair for cleaning.



OPTIONAL ACCESSORIES



Patient Support Rails+
Helps achieve proper positioning of the patient's arm for blood pressure capture.



Patient Support Rails
Provides patients with a 1¼ inch diameter continuous gripping surface for entering, exiting or repositioning on the exam chair.



Assist Arms
Designed to offer patients a stable gripping surface for accessing the chair and a sense of security during positioning.



Ritter 253 LED Light
Designed with easy access controls, high intensity light and an adjustable focal spot. Available in chair mount, wall mount and mobile options.



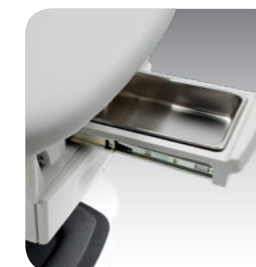
Articulating Knee Crutches
The unique ball-socket design allows for a maximum range of adjustment, designed to ensure optimum knee and leg support. Available in a non-articulating option.



IQvitals® Chair Mount
Convenient chair mount for the Midmark IQvitals vital signs device, designed to fit all Midmark and Ritter exam chairs.



Supply Assistant
Provides extra storage for bulky exam supplies. Keeps drapes, gowns and similar items within easy reach.



Stainless Steel Treatment Pan
Ideal for lower-body procedures or other situations in which removal of fluid and debris is necessary.

*Pelvic tilt not available on 224-001 model.

SPECIFICATIONS

FEATURES

The Ritter 224 has a gas-spring assisted back section with an easy access backrest mechanism while the Ritter 225 has a power back system. Both have adjustable low and high heights, built-in pillows, hideaway stirrups that lock in one of four lateral positions, foot extension shelves to expand the table length, paper roll holders hidden under the headrest, storage for one 24" x 3.56" diameter paper roll, polystyrene treatment pans*, foot control and leveling feet.

*No debris tray available for model 224-001.

Patient Weight Capacity:

500 lb (227 kg)

Height:

Uncompressed Height:

18" Low/37" High

(46 cm/94 cm)

Seamless Upholstery Dimensions:

28" W x 60" L

(71 cm/152 cm)

Length with Footrest Extended:

76" (193 cm)

Pelvic Tilt: 5 1/5°

Heated Drawer: 24.6 W

Heated Drawer Temperature:

92°F to 112°F at 115 VAC input

voltage, 70°F ambient

Paper Roll Holder: Holds 24" x 3.56" dia. paper roll (61 cm x 9 cm)

Receptacle Electrical Draw: 4 A

Hospital-grade, electrical receptacles

on left and right sides

Table Weight: 409 lb (185 kg)

Shipping Weight: 465 lb (211 kg)

Electrical Ratings

224-001: 115 VAC, 50/60 Hz, 9 A

224-002: 115 VAC, 50/60 Hz, 11.5 A

224-003: 115 VAC, 50/60 Hz, 11.5 A

225-002: 115 VAC, 50/60 Hz, 11.5 A

225-003: 115 VAC, 50/60 Hz, 11.5 A

ACCESSORIES

Patient Support Rails+

Patient Support Rails

Assist Arms

Supply Assistant

Articulating Knee Crutches

Knee Crutches

Stainless Steel Treatment Pan

IQvitals® Table Mount

STANDARD UPHOLSTERY COLORS

-  Mist 813
-  Stone 814
-  Restful Path 858
-  Iron Ore 851
-  Lunar Gray 845
-  Obsidian 857
-  Oasis 843
-  Soothing Blue 855
-  Dream 847
-  Mineral 844
-  Healing Waters 848
-  Shaded Garden 853
-  Citrus 849
-  Sandy Retreat 850
-  Curative Copper 846
-  Cranberry 859
-  Dark Linen 856
-  Latte 860
-  Robust Brown 852
-  Deep Earth 854

ULTRAFREE* UPHOLSTERY COLORS

-  Stone 865
-  Restful Path 868
-  Obsidian 867
-  Harbor 861
-  Wheatgrass 862
-  Spice 863
-  Cranberry 869
-  Dark Linen 866
-  Latte 870
-  Branch 864

*ULTRALEATHER® by Ultrafabrics

RITTER 224/225 COMPARISON CHART

	18" Seat Height (Uncompressed)	500 lb Weight Capacity	Power Base	Standard Rail Accessory Receivers	Power Back	Clean Assist Roller System	Active Sensing Technology*	Drawer Heater + Pelvic Tilt	Tamper-Resistant Electrical Receptacles	Debris Tray
225-002	•	•	•	•	•		•	•	•	•
225-003	•	•	•	•	•	•	•	•	•	•
224-001	•	•	•	•						
224-002	•	•	•	•			•	•	•	•
224-003	•	•	•	•		•	•	•	•	•

SOURCES

- 01 CDC. https://www.cdc.gov/ncbddd/disabilityandhealth/documents/disabilities_impacts_all_of_us.pdf
- 02 Bureau of Labor Statistics. <https://www.bls.gov/iif/>
- 03 <https://www.census.gov/newsroom/press-releases/2018/cb18-41-population-projections.html>
- 04 Reducing Risk: Fragala G. Reducing Occupational Risk to Ambulatory Caregivers. *Workplace Health Saf.* 2016 Sep;64(9):414-9. doi: 10.1177/2165079916642776. Epub 2016 May 12. PMID: 27174130



CARB 93120.2 Phase 2 Compliant

The color examples shown are the best representation of the original material. Actual color may vary slightly. We strongly recommend that you contact Midmark Customer Experience at 1.800.MIDMARK to request a sample before placing your order.

Midmark is an ISO 13485 and ISO 9001 Certified Company. Certain products are not included. See the complete list at: midmark.com/ISO

For more information, contact your Midmark dealer or call: 1.800.MIDMARK
Outside the USA call: 1.937.526.3662
or visit our website: midmark.com

© 2019 Midmark Corporation, Miamisburg, Ohio USA
Products subject to improvement changes without notice.
Litho in USA.
007-10154-00 Rev. A1 (7/19)

Ritter®